

SIMPLEX CHAINS

ISO REFERENCE	SEDIS REFERENCE	PITCH (mm)	GROSS PRICE (EUROS)*								LINKS PACKAGING (pieces per bag)
			Chains (riveted)		Connecting links (piece)			Cranked links (piece)			
			per meter	per box of 5 metres	206	208	209	216	217	221	
06 B-1	3N	9.525	15,44	77,20	2,04			2,73		4,77	5
08 B-1	7N	12.70	16,20	81,00	2,04			7,41		3,84	5
10 B-1	11N	15.875	19,95	99,75	2,32			6,44		4,04	5
12 B-1	13N	19.05	24,89	124,45	2,52			6,59		5,89	5
16 B-1	15T	25.40	46,04	230,20	5,67		11,37	16,25		12,07	5
20 B-1	17T	31.75	74,36	371,80			12,25	28,73	33,63	47,08	1
24 B-1	18T	38.10	134,23	671,15			18,75	41,65	47,40	76,75	1
28 B-1	20T	44.45	177,33				19,84	57,41	69,43	104,36	1
32 B-1	22T	50.80	208,93				23,12	64,91	59,32	147,12	1
40 B-1	23T	63.50	374,47				39,53	94,73	86,21	179,33	1
48 B-1	24T	76.20	646,76					241,10			1

DUPLEX CHAINS

06 B-2	203N	9.525	33,19	165,95	4,56			9,20		9,52	5
08 B-2	207N	12.70	38,41	192,05	4,05			9,60		8,31	5
10 B-2	211N	15.875	42,89	214,40	4,05			8,57		8,31	5
12 B-2	213N	19.05	53,53	267,65	4,63			12,39		12,39	5
16 B-2	215T	25.40	99,00	495,00	10,49			33,48		26,45	5
20 B-2	217T	31.75	159,87				15,57	34,41	46,47	52,77	1
24 B-2	218T	38.10	288,59				22,73	53,08	69,93	164,51	1
28 B-2	220T	44.45	381,27				28,93	65,92	136,85	193,49	1
32 B-2	222T	50.80	449,21				30,89	95,76	123,25	310,31	1
40 B-2	223T	63.50	805,10				80,31	125,97	149,31	356,76	1
48 B-2	224T	76.20	1390,55					464,65			1

TRIPLEX CHAINS

06 B-3	303N	9.525	54,04		7,92			14,45		17,47	5
08 B-3	307N	12.70	62,54	312,70	6,72			15,83		13,73	5
10 B-3	311N	15.875	69,81	349,05	6,81			11,61		11,85	5
12 B-3	313N	19.05	87,15	435,75	7,23			19,05		19,47	5
16 B-3	315T	25.40	161,14		15,99			38,33		39,64	5
20 B-3	317T	31.75	260,26				25,03	45,95	70,37	78,36	1
24 B-3	318T	38.10	469,79				33,88	68,01	103,83	199,32	1
28 B-3	320T	44.45	620,67				48,59	109,09	214,68	279,76	1
32 B-3	322T	50.80	731,27				55,96	126,91	187,64	544,31	1
40 B-3	323T	63.50	1310,63				100,35	204,37	234,07	589,77	1
48 B-3	324T	76.20	2263,68					610,81			1



*Price valid for chains delivered in 5m lengths, and for connecting links supplied separately (not mounted).
For any other length or with mounted connecting links : **+ 10% on the chain's price**

N° 206



Spring clip connecting link

N° 208



Cottered connecting link

N° 209



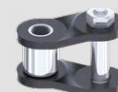
Connecting link with self locking nuts

N° 216



Cottered single cranked link

N° 217



single cranked link with self locking nuts

N° 221



Double cranked link